

REQUEST FOR PROPOSAL

DEPTH STRATIFIED, RANDOM DESIGN LONGLINE RESEARCH SURVEY IN SOUTHERN BRITISH COLUMBIA WATERS

ISSUE DATE: June 24, 2011

DEADLINE FOR SUBMISSION OF PROPOSALS: July 25, 2011 2:00pm PST

Table of Contents

1.0 INTRODUCTION	3
2.0 NEW FOR 2011	4
2.1 Possibility of Reduced Survey Program	4
2.2 Search time of 45 minutes.....	4
3.0 PROPOSED SCHEDULE	5
3.1 Submission deadline for all proposals:	5
4.0 STATEMENT OF WORK	5
4.1 Eligibility	7
4.2 Research Survey Area Charters	7
4.3 Fishing Depths	8
4.4 Landing Ports	8
4.5 Fishing Gear	8
4.6 Bait and Ice	8
4.7 Onboard Observers	8
4.8 Vessel Requirements.....	9
4.9 Vessel Captain	10
4.10 Vessel Crew	10
4.11 Safety	10
4.12 Indemnification	11
4.13 Pre-Survey and Post-Survey Meetings	11
5.0 FISH CAUGHT DURING THE CHARTER	11
6.0 BIDDING INSTRUCTIONS.....	13
6.1 Selection Criteria	14
7. PHMA CONTACT INFORMATION	14
APPENDIX A – Southern Survey Areas Maps (2011)	15
APPENDIX B – Data Recording and Biological Sampling Requirements	28
APPENDIX C. BID TENDER FORM	29

1.0 INTRODUCTION

The Pacific Halibut Management Association of British Columbia (PHMA), in consultation with Fisheries and Oceans Canada (DFO), initiated a depth stratified, random design research longline survey in August 2006. The surveys are conducted using standardized longline gear. The program is designed to provide catch rates of all species and biological samples of inshore rockfish off the coastal waters of British Columbia (B. C.) for stock assessment. Biological data collected includes length, sex, gonad maturity, and otoliths for age determination. Species composition and catch rate are measured for all sets.

The survey alternates annually between northern and southern areas of coastal B.C. The purpose of repeating the survey bi-annually for each area is to monitor stock status by assessing size and age distributions, species compositions, and catch rates for use in the assessment of stocks. The 2011 survey will cover southern B. C. waters in Areas 3C, 3D, 4B (portion), 5A and 5B (portion). Maps of the 2011 survey areas and set locations are included (see Appendix A). The PHMA is requesting bids from commercial halibut longline vessels to perform the surveys during the summer. All charters must be conducted between August 1, 2011 and September 15, 2011.

The research survey program is contingent on the level of funding provided by DFO, the price of quota leases, the total cost of the fishing charters, and PHMA facilitation costs. Once all charter bids have been received, if the overall research survey program is deemed to be in excess of the funding available, the 2011 research survey program may be reduced in the number of sets per area or cancelled. The decision to cancel or reduce the survey program will be at the discretion of PHMA.

Therefore, for 2011, vessel owners are required to submit three bids for each Area that they are interested in surveying. These bids shall include the full survey of 66 sets and reduced surveys of 58 sets and 50 sets. For example, if you are interested in bidding on Area 4, you must include cost estimates (total and daily rates) for 66 sets, 58 sets and 50 sets in that area. Set locations for the three survey scenarios are provided in the Appendices.

All fish taken in association with the charters will be subject to the normal port monitoring requirements. Vessels will be responsible for covering all costs associated with offloading in a non-designated port, hails, EM equipment and dockside monitoring costs. Vessels will also be responsible for all scientific observer logistics including contracting, carrying and paying for an observer for all charter trips. All bids should reflect an all-inclusive charter to be bid on costs per fishing day including, but not limited to, observer costs, fuel and provisions. PHMA will pay for all bait and ice utilized during the surveys. Vessels are reminded to carefully consider **all** costs associated with performing the work over the time frame of the bid, and to budget these into their proposal.

It is a condition of the charter that the entire catch of all allowable commercial species (with the exception of dogfish which are not to be retained) accumulated during the charter is sold by the PHMA and all proceeds belong to the PHMA. The PHMA will contribute 10% of the net

proceeds of fish sales, after fish leasing costs, to the vessel owner provided fish quality meets or exceeds industry standards and does not result in prices lower than prevailing market prices.

Changes have been made for 2011. These changes are outlined in Section 2.0. Please read this Request for Proposal carefully to ensure you fully understand all requirements and responsibilities.

2.0 NEW FOR 2011

2.1 Possibility of Reduced Survey Program

The research survey program is contingent on the level of funding provided by DFO, the price of quota leases, the total cost of the fishing charters, and PHMA facilitation costs. Once all charter bids have been received, if the overall research survey program is deemed to be in excess of the funding available, the 2011 research survey program may be reduced in the number of sets per area or cancelled. The decision to cancel or reduce the survey program will be at the discretion of PHMA.

For 2011, vessel owners must submit bids for three possible charter options per Area: Area 4 (Full Survey of 66 sets and reduced survey of 58 sets and 50 sets), Area 5 (Full Survey of 66 sets and reduced survey of 58 sets and 50 sets), Area 6 (Full Survey of 66 sets and reduced survey of 58 sets and 50 sets).

2.2 Search time of 45 minutes

Blocks are assigned to depth strata based on their estimated average depth and blocks are then selected at random from each depth/area strata. Once a set of survey blocks is selected the vessel captain is asked to scout the survey block to find a suitable fishing location at the assigned depth within each pre-selected 2 km x 2 km block. A 45 minutes search time is suggested as a guideline. The search time guideline will be further discussed on the pre-survey conference call. The location of each set within a block is at the vessel captain's discretion; however, it is a requirement that the hooks between the anchors be set within the selected block at the specified depth.

3.0 PROPOSED SCHEDULE

DEPTH STRATIFIED, RANDOM DESIGN LONGLINE RESEARCH SURVEY IN SOUTHERN BRITISH COLUMBIA WATERS

Request for Proposal (RFP) distributed: June 24, 2011

Deadline for written questions on the RFP: July 11, 2011

Written questions on the RFP are to be directed to

Chris Sporer
Executive Manager
PACIFIC HALIBUT MANAGEMENT ASSOCIATION OF BC
c/o Schmidt, Berg and Company
101-15399 102A Avenue
Surrey, B.C., Canada V3R 7K1

Telephone: (604) 523-1528
Email Address: phma@telus.net

Submission deadline for all proposals: July 25, 2011 at 2:00 pm PST

Selection of successful bidders: on or before July 27, 2011

Contracts awarded: on July 27, 2011 or after vessel inspection

Pre-Survey Conference Call: on July 28, 2011 at 1:00 pm PST

Surveys conducted: between August 1 and September 15, 2011.

Post-Survey Conference Call: on October 4, 2011 at 1:00 pm PST

4.0 STATEMENT OF WORK

This request for proposal does not confer any obligation on the part of the PHMA to award contracts for any survey area. In addition, the research survey program is contingent on the level of funding provided by DFO, the price of quota leases, the total cost of the fishing charters, and PHMA facilitation costs. Once all charter bids have been received, if the overall research survey program is deemed to be in excess of the funding available, the 2011 research survey program may be reduced in the number of sets per area or cancelled. The decision to cancel or reduce the survey program will be at the discretion of PHMA.

For 2011, vessel owners must submit bids for three possible charter options per Area: Area 4 (Full Survey of 66 sets and reduced surveys of 58 sets and 50 sets), Area 5 (Full Survey of 66

sets and reduced surveys of 58 sets and 50 sets), Area 6 (Full Survey of 66 sets and reduced surveys of 58 sets and 50 sets).

Research fishing includes setting/hauling of standardized longline gear in three depth stratum in three survey area locations within Areas 5B (portion), 4B (portion), 5A, 3D, and 3C. Maps of the 2011 survey areas and set locations are included (see Appendix A for full survey of 198 sets, for reduced survey of 174 sets, and for reduced survey of 150 sets). The random stratified survey design divides the hard bottom areas (excluding Rockfish Conservation Areas) coastwide into a grid of 2 km by 2 km squares.

Blocks are assigned to depth strata based on their estimated average depth and blocks are then selected at random from each depth/area strata. Once a set of survey blocks is selected the vessel captain is asked to scout the survey block to find a suitable fishing location at the assigned depth within each pre-selected 2 km x 2 km block. A search time of 45 minutes is suggested as a guideline. This guideline will be further discussed on the pre-survey conference call.

The location of each set within a block is at the vessel captain's discretion; however, it is a requirement that the hooks between the anchors be set within the selected block at the specified depth. In the event a block is not fishable (does not have enough area for a set within the depth interval) it should be rejected and the fisher proceeds to the next survey block.

Fishing for survey purposes will be carried out during daylight hours, gear set ½ hour after sunrise (i.e., first anchor in the water) and gear out of the water ½ hour before sunset (i.e., last anchor out of the water). Each string of gear shall be set and hauled back after a two-hour soak. The soak time is two hours in duration based on time of last anchor in the water when setting to the first anchor out of the water when hauling.

A temperature/depth recorder (provided by DFO) must be snapped onto the groundline midway along each set.

Vessels must record one continuous trackline for the research trips using an electronic monitoring (EM) system currently required for the commercial fishery. These units will be programmed to collect continuous GPS positioning with marks for the use of the hydraulics and drum (no video monitoring). The programming, data review and servicing will be paid for by DFO. The acquisition of the EM units will be the responsibility of the vessels.

While under charter the fishing vessel must not participate in other commercial fishing. While under charter the fishing vessel must carry an onboard observer.

Vessels must hail out prior to each charter trip and hail in prior to landing following standard procedures presently in place in the commercial halibut fishery.

It is a condition of the charter that the entire catch of all allowable commercial species (with the exception of dogfish which are not to be retained) accumulated during the charter is sold by the PHMA. All rockfish caught are to be retained and landed. All halibut, sablefish and lingcod caught that are within legal/marketable sizes are to be retained and landed.

PHMA will identify the fish processor/buyer for the vessel on a trip by trip basis. Vessels must contact PHMA 24 hours prior to hail-in/landing to advise of catch composition and to receive direction where to deliver. To advise of catch composition and receive direction where to deliver, vessels must contact one of the following PHMA directors:

Herb van Grootel	Or:	Gary Williamson
604-948-2731		604-946-6507
604-328-5555 (cell)		604-341-2297 (cell)

It is a requirement that the vessel execute the survey according to the specified protocol. Bidders are also responsible for ensuring they understand and comply with the fish requirements outlined on the Bid Tender Form (Appendix C). Deviations from specification will jeopardize the usefulness of the survey results and may result in the cancellation of the charter, at any time, if the survey objectives are thought to be compromised.

4.1 Eligibility

Any halibut longline licensed vessel (*L or FL licence category*) that meets the fishing gear, vessel and other requirements or conditions outlined in this request for proposal is eligible to submit bids.

4.2 Research Survey Area Charters

See Appendix A for all Survey Scenarios

Three research survey area charters may be offered for bid in 2011. Vessel owners must submit bids for three possible charter options per area: Area 4 (Full Survey of 66 sets, reduced survey of 58 sets and reduced survey of 50 sets), Area 5 (Full Survey of 66 sets, reduced survey of 58 sets and reduced survey of 50 sets), Area 6 (Full Survey of 66 sets, reduced survey of 58 sets and reduced survey of 50 sets).

Set locations and coordinates for research survey charter options in Survey Areas 4 to 6 will be available through the PHMA office or from Lynne Yamanaka (DFO Pacific Biological Station). The set locations will also be available in a Nobeltec compatible file and distributed electronically to fishermen who ask for it.

Full survey consists of **66 set/hauls** and is estimated to take a maximum of **18** fishing days at four (4) set locations per day.

Reduced Survey consisted of 58 set/hauls and is estimated to take a maximum of 16 fishing days at four (4) set locations per day.

Reduced Survey consists of 50 set/hauls and is estimated to take a maximum of 14 fishing days at four (4) set locations per day.

4.3 Fishing Depths

- Shallow depth strata (20 – 70 m).
- Mid depth strata (71 – 150 m).
- Deep depth strata (151 – 260 m).

4.4 Landing Ports

Landings can only occur at the following designated ports:

- Port Hardy
- Coal Harbour
- Ucluelet
- Tofino

Vessels will be responsible for covering all costs associated with offloading in a non-designated port.

4.5 Fishing Gear

The vessel owner shall provide and replace, as needed, all gear and associated equipment necessary for commercial longline fishing. The PHMA shall not be responsible for lost gear. There will be no compensation paid for lost gear.

Standardized strings of gear shall be used for research fishing. Each string shall consist of:

- 450 hooks.
- 14/0 circle hooks with 12 to 18 inch perlon gangions and the overall gear length from end to end (e.g., snap to hook) must be 20 to 26 inches, with one swivel at the hook end.
- 8 ft hook spacing.

4.6 Bait and Ice

The PHMA will bear the cost of all bait and ice for the charters and also arrange for availability at or shipping to the designated landing ports.

Bait used for the charters will be whole squid, cut into 30 gram pieces. The crew will be responsible for cutting the squid into pieces and baiting the gear. Instructions for cutting and baiting will be provided to the vessel prior to the commencement of the charter on the pre-survey conference call.

4.7 Onboard Observers

While under charter the fishing vessel must carry an onboard observer. The vessel must provide food and accommodation for one onboard observer and assist, where possible, with their duties.

The observer shall note all details of fishing effort, location, time, and duration as well as determine species composition of the catch, and select the process appropriate for rockfish

species biological sampling (see Appendix B). The observer will also coordinate with the captain and crew the deployment of the temperature/depth sensors and the recording of the sensor number with the appropriate fishing set number.

It is required that all charter vessel crew members be available to assist the observer with catch sorting and biological sampling during the charter. Individual fish may be sampled for whole wet weights. All inshore rockfish caught are likely to be cut open to determine sex, gonad maturity. Once split open gills and guts should be removed. Other species of fish caught may also be subject to the aforementioned sampling process on an opportunistic basis. Otoliths to determine age are to be removed from under the gill plate to retain maximum fish value.

Vessels will be responsible for contracting, carrying and paying for an onboard observer for all charter trips, as well as, any observer travel (pick-up and drop-off) and land-based costs. Vessels are reminded to carefully consider **all** costs associated with performing the work over the time frame of the bid, and to budget these into their proposal. Observers can be arranged by calling Scott Buchanan at Archipelago Marine Research Limited (250-383-4535). Vessel masters should also contact Scott Buchanan at Archipelago Marine Research Limited to determine applicable fees and payment policies.

4.8 Vessel Requirements

Vessels submitting bids must have a valid halibut longline fishing license and complete in full the Bid Tender Form.

The vessel must be mechanically sound in all respects, seaworthy for fishing in the designated areas.

Vessels must possess valid M.O.T inspection certificates and be prepared to undergo an inspection by the Canadian Coast Guard Fleet Safety and Security officer. The vessel inspection will be arranged through DFO.

The vessel must be suitably equipped for fishing with the standardized gear outlined in Section 4.5.

Vessels must have adequate deck space to allow the scientific observer/technician to carry out their required duties. Vessels must provide a level area approximately 0.75 m² (~8 ft²) on deck in a safe area away from working fishing gear to accommodate the scientific observer/technician and their equipment. This level working area for the observer must be at an appropriate height for the observer to safely carry out his or her duties. In addition to the observer's working area, an adjacent equivalent deck area must be available for the storage of fish in totes for sampling.

The vessel must provide food and accommodation for one scientific observer/technician. Accommodations must be clean and sanitary. The vessel shall have adequate accommodations for the vessel crew and one scientific observer; male or female. The vessel must have a functioning marine head, which can be used in privacy.

Vessels must record one continuous trackline for the research trips using an EM system currently required for the commercial fishery. These units will be programmed to collect continuous GPS positioning with marks for the use of the hydraulics and drum (no video monitoring). The programming, data review and servicing will be paid for by DFO. The acquisition of the EM units will be the responsibility of the vessels.

4.9 Vessel Captain

The vessel captain must be currently active with at least 5 years commercial groundfish longlining experience in the past 6 years. The vessel captain must be knowledgeable and experienced with longlining in the specific southern study area for which a bid is submitted. The vessel captain must have demonstrated rockfish fishing experience in the specific survey area by documented inshore rockfish fishery landings through logbooks, EM, dockside monitoring and at-sea observer assignments.

The vessel captain must be competent in the use of modern navigational and fish detecting equipment. The vessel captain is responsible for being knowledgeable in and adhering to all Provincial, Federal and International laws pertaining to commercial fishing.

The vessel captain must be acceptable to the PHMA. The PHMA reserves the right to require the replacement of a vessel captain during the charter if found unacceptable in skill, experience or behaviour.

4.10 Vessel Crew

The vessel must have a minimum of two (2) experienced deckhands in addition to the vessel captain. The crew must be experienced in longline fishing operations and competent in longline construction and/or repair, baiting methods and fish dressing and icing techniques. Vessel crew must have a minimum of two years experience in their specified role (e.g., bosun, deck hand, cook, and engineer).

Crew members are required to assist the onboard observer in carrying out their sampling duties.

Vessel crew members must be acceptable to the PHMA. The PHMA reserves the right to require the replacement of a vessel crew member during the charter if found unacceptable in skill, experience or behaviour.

4.11 Safety

The vessel owner and vessel captain are responsible for all matters relating to safety of personnel, the vessel and equipment operation. The vessel captain will adhere at all times to navigational rules whether it be during fishing operations, running, drifting, or when at anchor.

Vessels must have insurance (Hull & Machinery coverage, Protection & Indemnity Coverage to a limit of at least \$2.0 million) and their underwriter's consent to engage in the survey. Vessels

must submit a letter from their insurance company providing proof of insurance and consent to engage in the survey.

No alcohol consumption or illegal drug use is allowed aboard PHMA chartered vessels, including days at sea and anchor days, as well as port days or when the vessel is at the dock. This is a **no tolerance policy** which will be in effect at all times the vessel is on charter, and violation of this policy is sufficient cause for contract termination, and possible exclusion from future survey eligibility for one or more years.

4.12 Indemnification

The vessel owner agrees to indemnify and save harmless the PHMA from all claims and liability for loss or damage from any cause, including injury, damage or loss of personnel, vessel, its equipment, and third parties.

4.13 Pre-Survey and Post-Survey Meetings

Pre-Survey and Post-Survey meetings shall include PHMA, DFO, Archipelago Marine Research Ltd., interested fish processor/buyers and the vessel owner and the vessel captain, if they are different. As a condition of the charter the vessel owner and vessel captain (if different individuals) must participate in both conference calls to discuss issues relating to the charter and survey.

Upon the award of a charter and prior to the start of the charter, a meeting will be held to discuss issues relating to the charter and survey. This pre-survey conference call will be held on Thursday, July 28, 2011 at 1:00 pm PST.

After completion of the survey, a post-survey debriefing will be held with the vessel owner and vessel captain, and the fish processor/buyer(s). The purpose of the debriefing is to review the survey work completed and seek input from the vessel operator and the fish processor/buyer. This post-survey conference call will be held on Tuesday, October 4, 2011 at 1:00 pm PST.

5.0 FISH CAUGHT DURING THE CHARTER

All rockfish caught are to be retained and landed. All halibut, sablefish and lingcod caught that are within legal/marketable sizes are to be retained and landed.

It is a condition of the charter that the entire catch of **all allowable commercial species (except dogfish that is not to be retained)** accumulated during the charter is sold by **the PHMA** and **all proceeds belong to the PHMA**. The PHMA will contribute 10% of the net proceeds of fish sales, after fish leasing costs, to the vessel owner provided fish quality meets or exceeds industry standards and does not result in prices lower than prevailing market prices.

The PHMA is committed to selling only fish of the highest possible quality. All fish caught on a PHMA charter must be handled in manner which meets or exceeds the industry standards. In

order to maintain a high quality product and maximize returns from the sale of fish the following will apply:

- 1) PHMA will identify the fish processor/buyer for the vessel on a trip by trip basis. Vessels must contact PHMA 24 hours prior to hail-in/landing to advise of catch composition and to receive direction where to deliver.
- 2) Otolith extraction must be done from under the gill plate.
- 3) Fish must be offloaded no later than day six (6) of the trip.
- 4) Following each sale, the buyer will be required to prepare a fish quality report and send it the PHMA office indicating that the quality of the fish landed for any PHMA charter did not result in lower than prevailing market prices being paid to the PHMA.

Payment of the 10% of the net proceeds of fish sales will be contingent on these conditions being met for all charter trips. The PHMA cannot guarantee the amount of fish caught or the prices received from the sale of the fish. The PHMA will arrange for and cover the costs of the necessary quota (IVQ) to cover all legal/marketable sized halibut, sablefish and lingcod retained and landed. The PHMA will arrange for and cover the costs of the necessary quota (IVQ) to cover all legal/marketable sized dogfish released at sea.

6.0 BIDDING INSTRUCTIONS

All bids must be submitted on the Bid Tender Form provided by the PHMA. The Bid Tender Form must be fully completed and must be signed where indicated.

Tenders are to quote an all-inclusive rate to complete the charter in a given survey area. All-inclusive consists of food, fuel, observer and vessel costs for approximately fourteen (14), sixteen (16) and eighteen (18) fishing days (the number of fishing days is dependent on the area surveyed and whether it is a full or reduced charter). The cost per fishing day must also factor in any additional travel days, additional observer costs (e.g., travel, land-based costs and drop off fees) and all the expenses for hauls, dockside monitoring, EM equipment, and offloading services. Bids should be expressed in dollars to cover all the required sets in one survey area. Vessels are reminded to carefully consider **all** costs associated with performing the work over the time frame of the bid, and to budget these into their proposal. Any applicable taxes are considered to be in addition to the submitted bid.

For the three charters awarded the PHMA will pay 50% of the bid price within fourteen (14) days of completion of the charter **and** receipt of an invoice (total bid price) from the vessel. The remaining 50% of the bid price/invoice will be paid 30 days following completion of the charter **and** receipt of an invoice (total bid price) from the vessel. Where applicable, the vessel share of the net proceeds from the fish sales will be paid following the successful completion of arrangements to lease fish. Bidders should be aware that it could take several months for the successful completion of arrangements to lease fish.

The charter in each survey area must commence no earlier than August 1 and be completed no later than September 15, 2011. Tenders should also specify the plan for conducting the research survey i.e. dates, number of crew, haul-out port, port of landing, etc.

Please note that all bids must be fully completed, signed and received by no later than **2:00 p.m. (PST) on 25 July 2011**. Bids are to be identified "Southern Longline Survey 2011 Bid" and submitted to the following address:

Pacific Halibut Management Association of BC,
c/o Schmidt, Berg and Company
101-15399 102A Avenue
Surrey, BC V3R 7K1
Canada

If mailing, please allow sufficient time for your bid to arrive. Fully completed and signed bids may also be submitted by facsimile (604-588-6708).

6.1 Selection Criteria

The PHMA will not be obligated to accept the lowest bid or any bid received.

The following criteria will be considered in rating the bids (in no particular order): seaworthiness and general condition of the vessel and its equipment, the vessel's availability, the vessel's ability to meet the vessel requirements, the captain's experience, the qualifications of the crew, quality of accommodations and work area, compliance with fishery management, bid price and the vessel's impact on PHMA revenues and operating costs.

7. PHMA CONTACT INFORMATION

Requests for information about the survey or questions on the RFP are to be directed to:

Chris Sporer, Executive Manager
PACIFIC HALIBUT MANAGEMENT ASSOCIATION OF BC
c/o Schmidt, Berg and Company
101-15399 102A Avenue
Surrey, BC V3R 7K1
Canada

Telephone: (604) 523-1528
Email Address: phma@telus.net

To advise of catch composition and to receive direction where to deliver, successful bidders must contact one of the following PHMA directors:

Herb van Grootel	Or:	Gary Williamson
604-948-2731		604-946-6507
604-328-5555 (cell)		604-341-2297 (cell)

APPENDIX A – Southern Survey Areas Maps (2011)

Table 1. Depth strata (20-70, 71-150, 151-260 m) and allocation of sets for the 2011 survey.

Area	Depth Class	# Blocks	Number Selected		
			198	174	150
3C	1	231	16	14	12
	2	176	12	11	9
	3	25	2	2	1
3D	1	344	24	21	18
	2	416	29	25	22
	3	132	9	8	7
4B	1	14	1	1	1
	2	15	1	1	1
	3	5	0	0	0
5A	1	269	19	16	14
	2	443	31	27	23
	3	201	14	12	11
5B	1	130	9	8	7
	2	324	22	20	17
	3	124	9	8	7

Figure 1. Overview of all locations of the Full Survey of 66 selected sampling blocks or set locations.

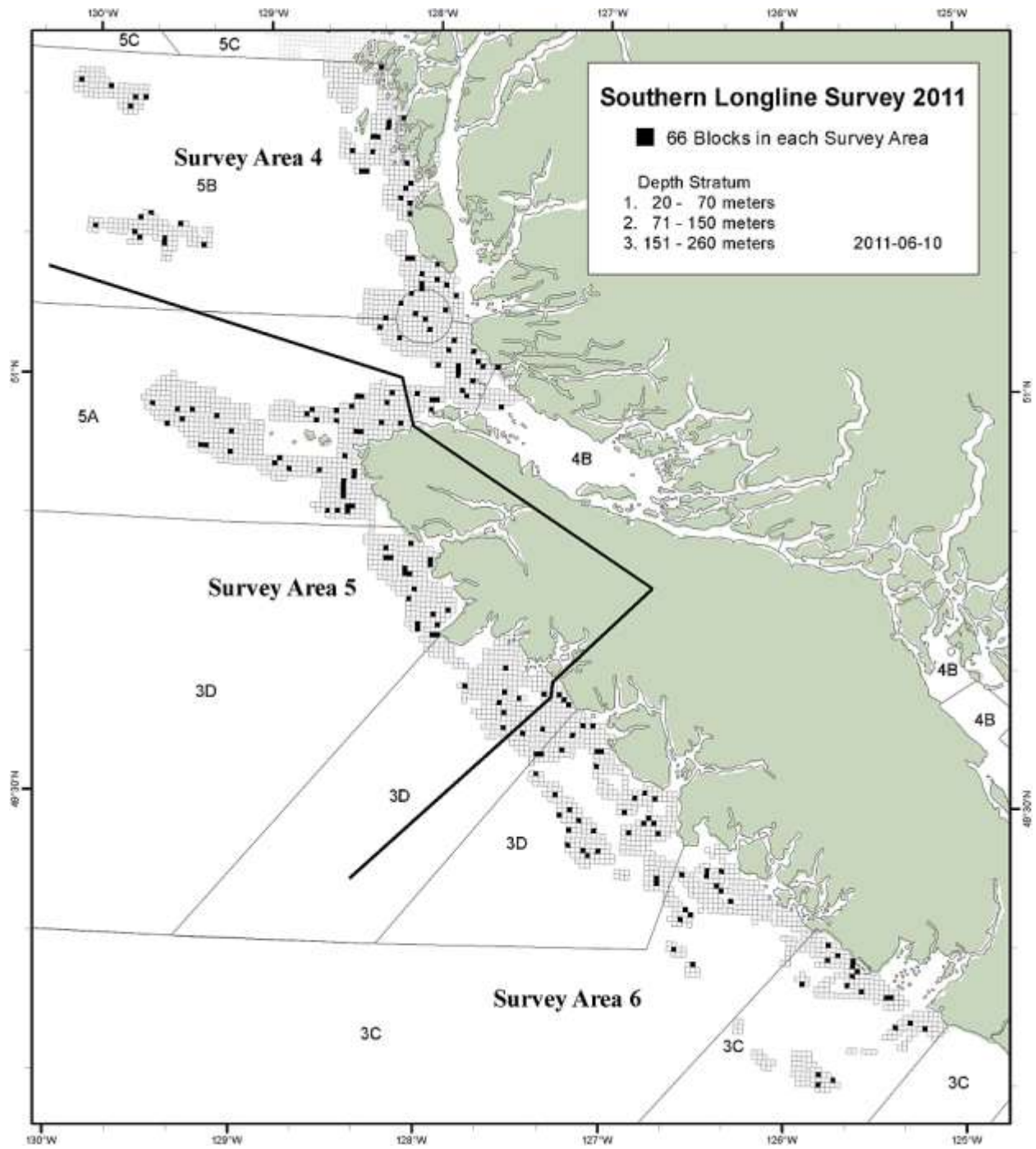


Figure 1a. Area 4 fishing locations for the Full Survey of 66 selected sampling blocks.

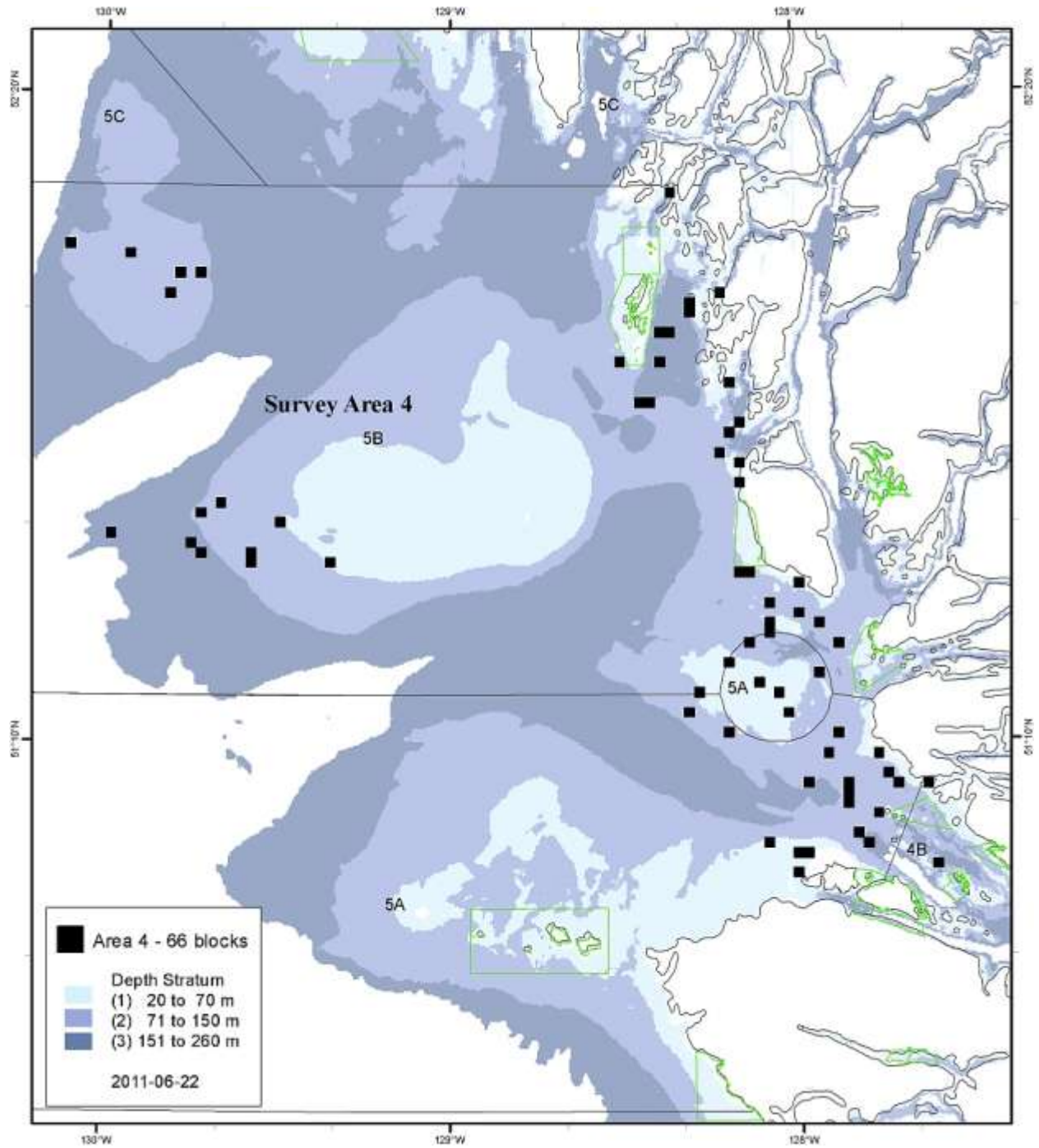


Figure 1b. Area 5 fishing locations for the Full Survey of 66 selected sampling blocks.

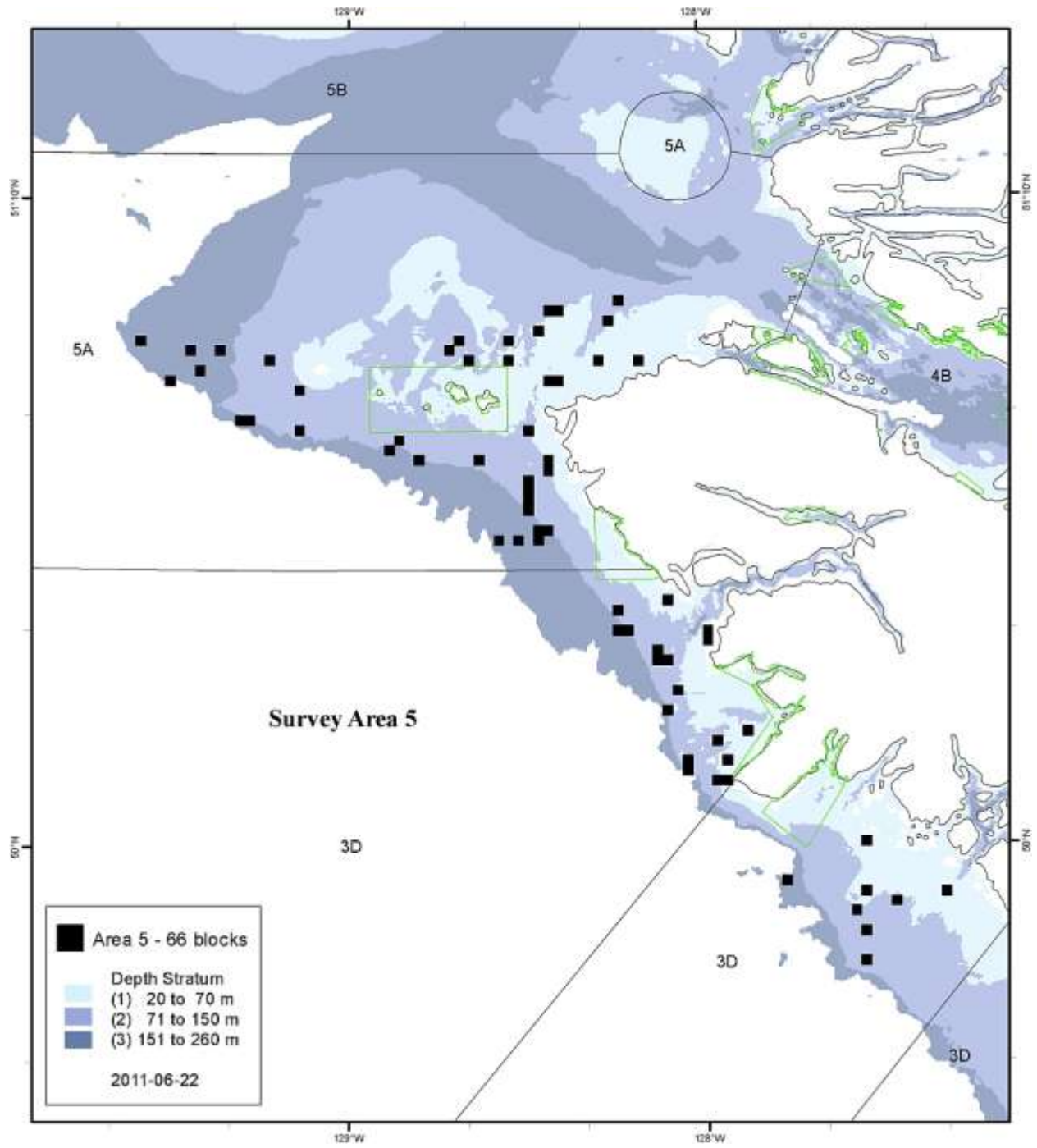


Figure 1c. Area 6 fishing locations for the Full Survey of 66 selected sampling blocks.

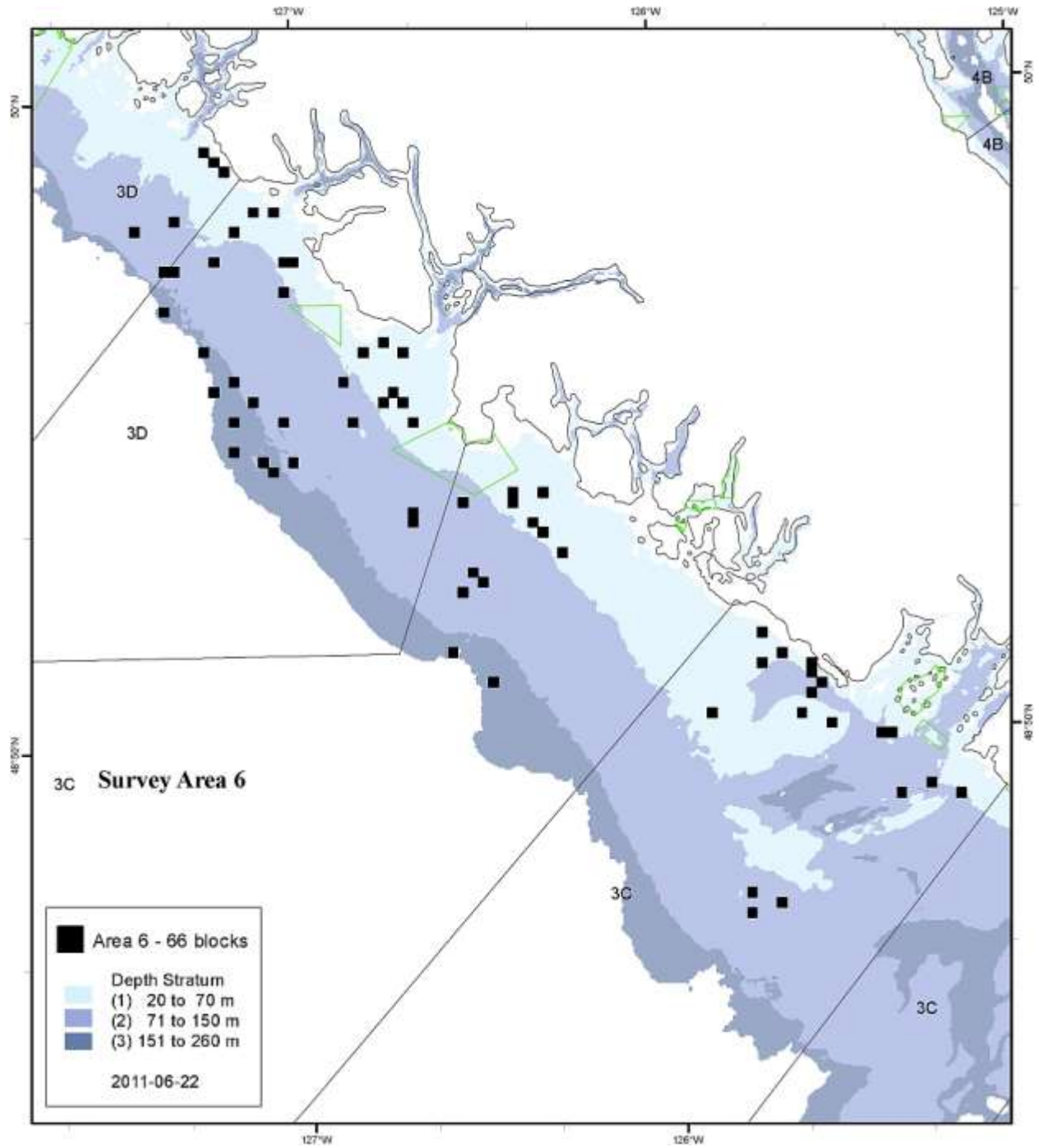


Figure 2. Overview of all locations of the Reduced Survey of 58 selected sampling blocks or set locations.

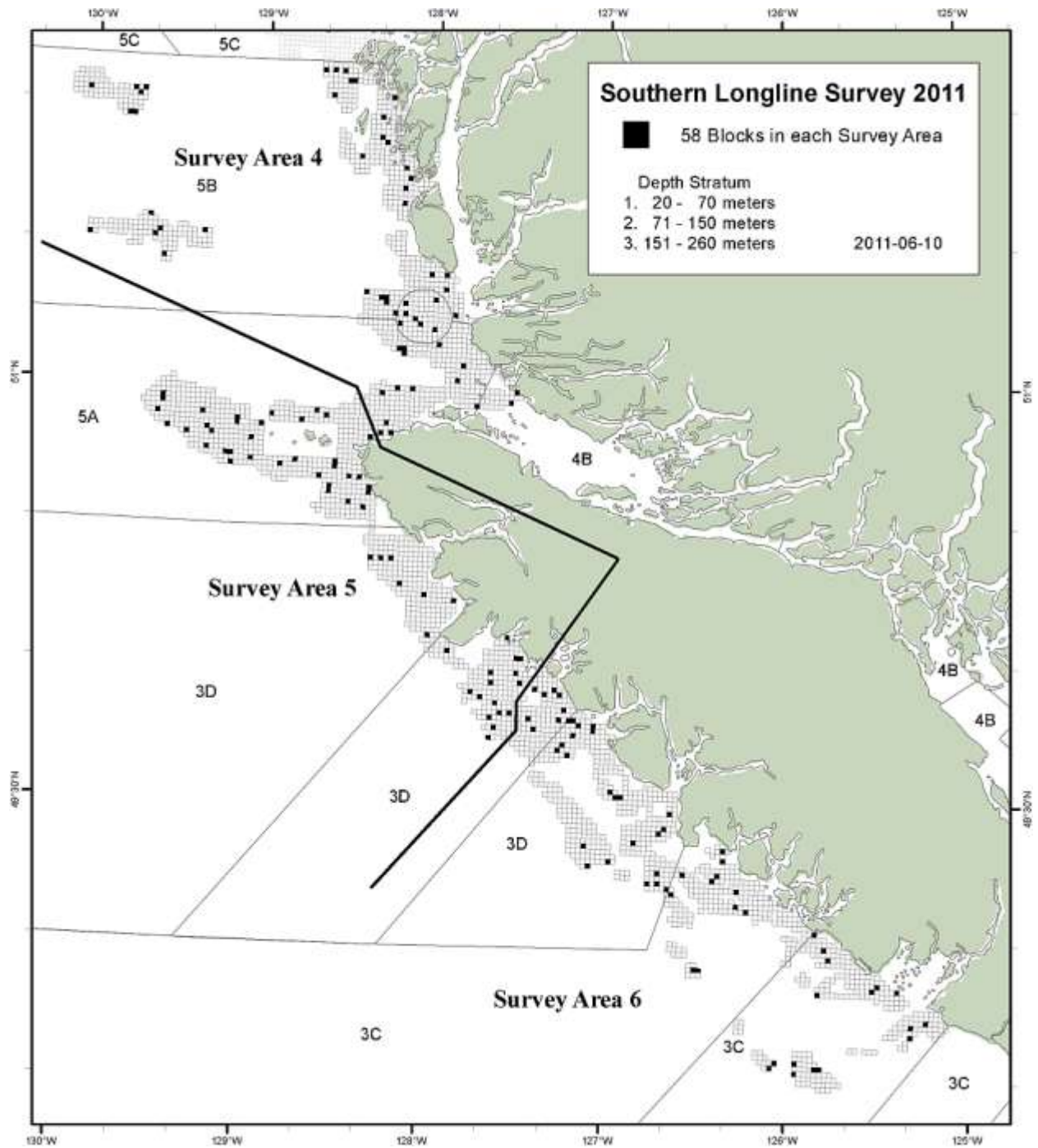


Figure 2a. Area 4 fishing locations for the Reduced Survey of 58 selected sampling blocks.

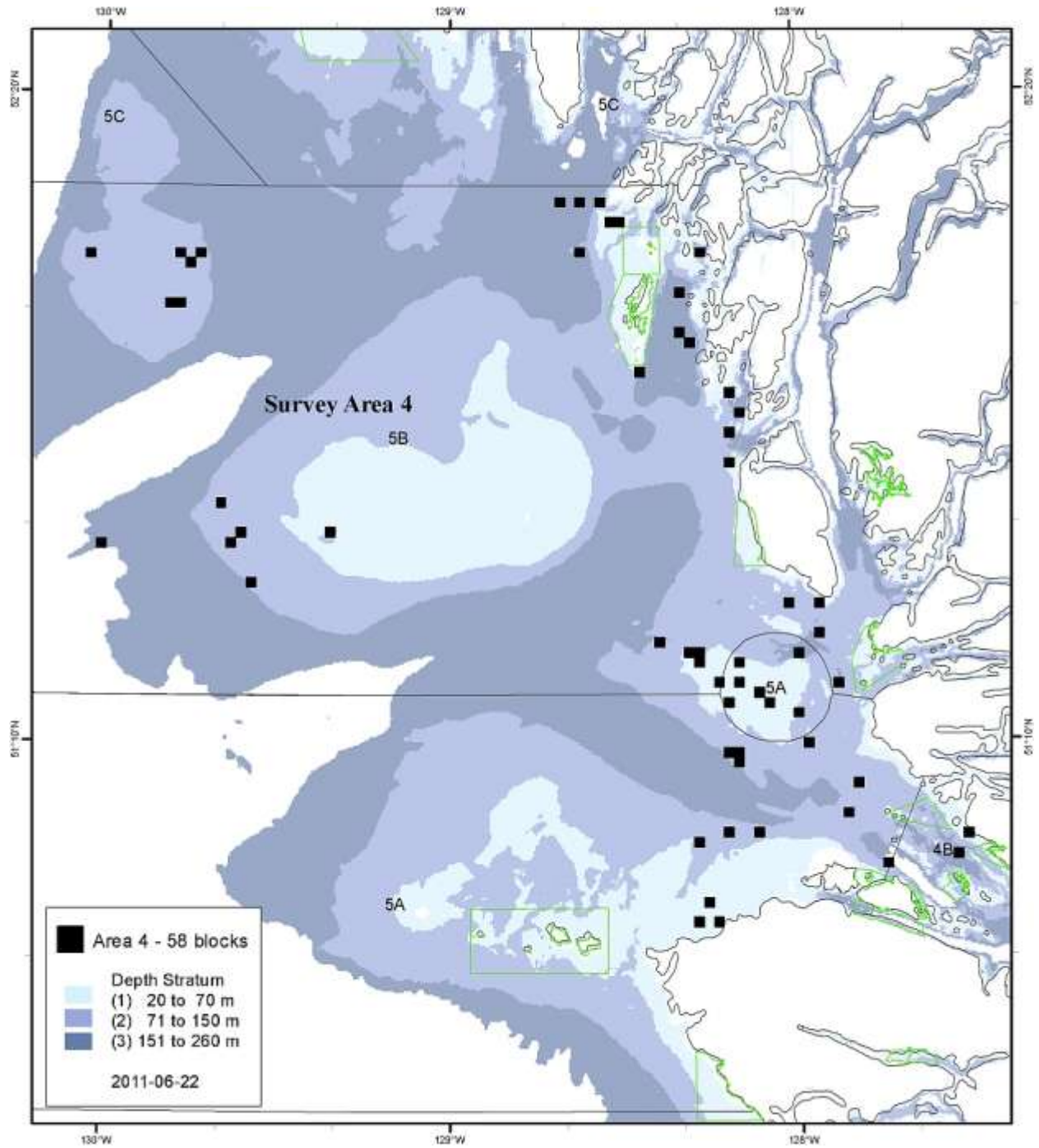


Figure 2b. Area 5 fishing locations for the Reduced Survey of 58 selected sampling blocks.

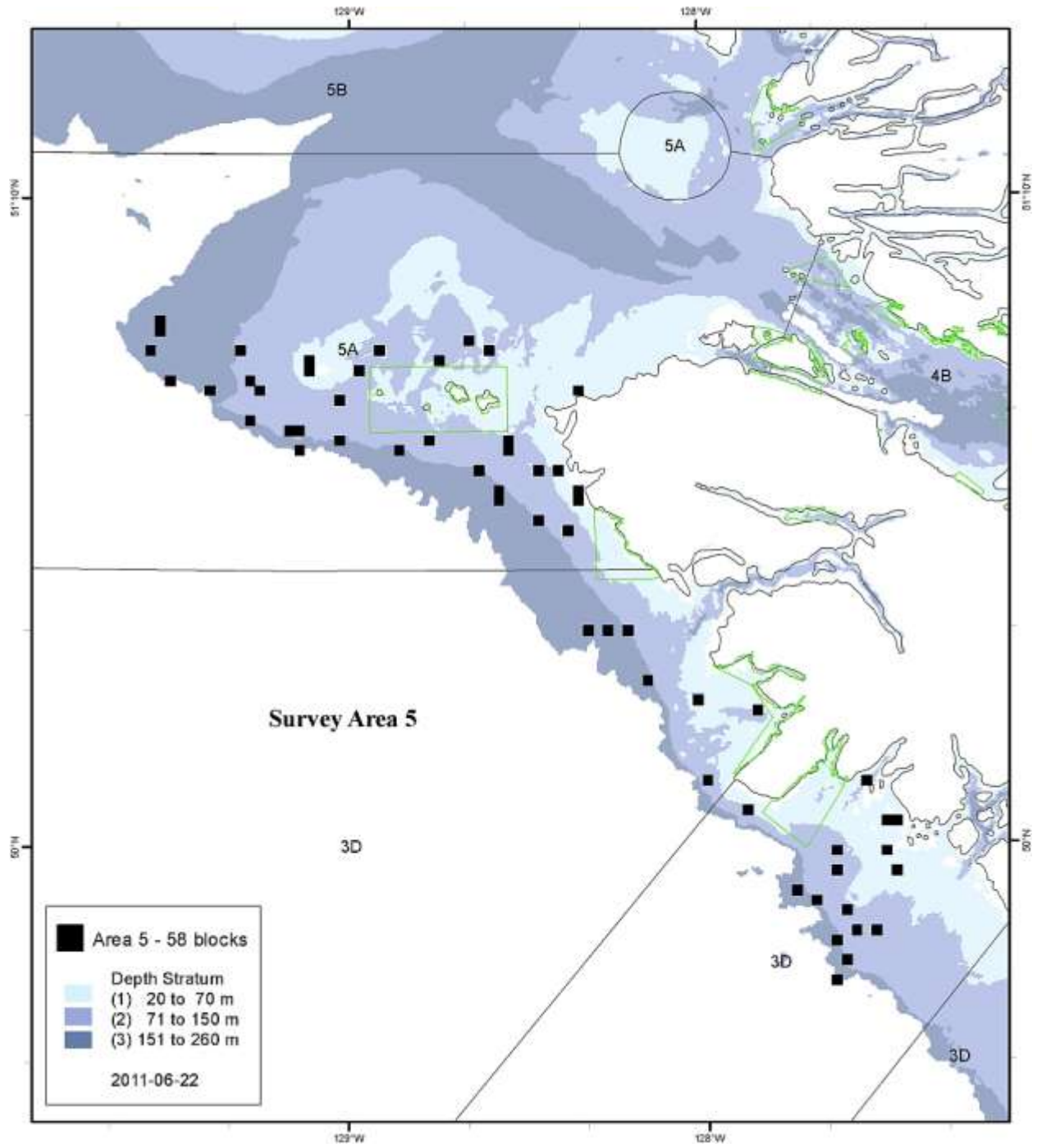


Figure 2c. Area 6 fishing locations for the Reduced Survey of 58 selected sampling blocks.

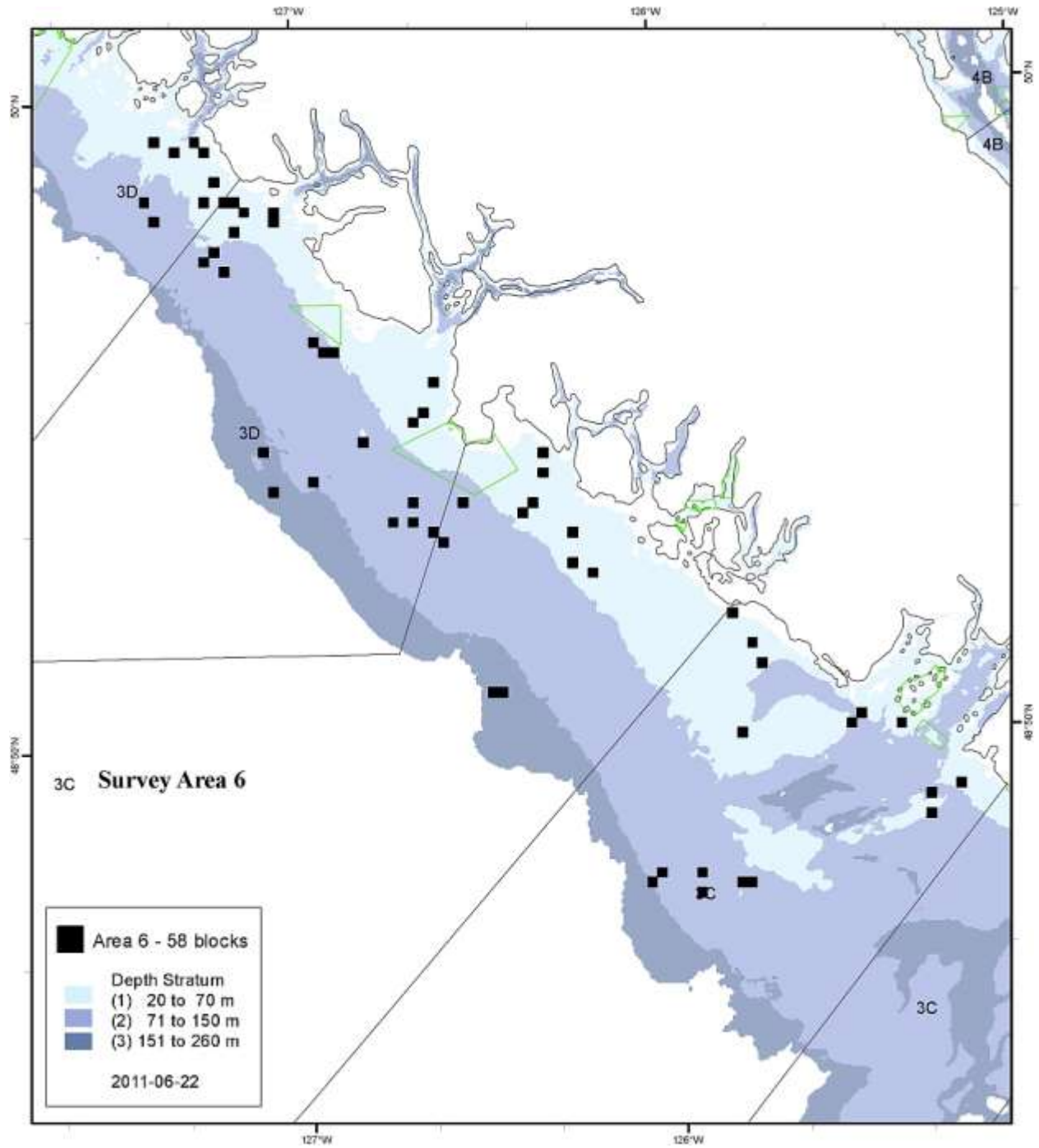


Figure 3. Overview of all locations of the Reduced Survey of 50 selected sampling blocks.

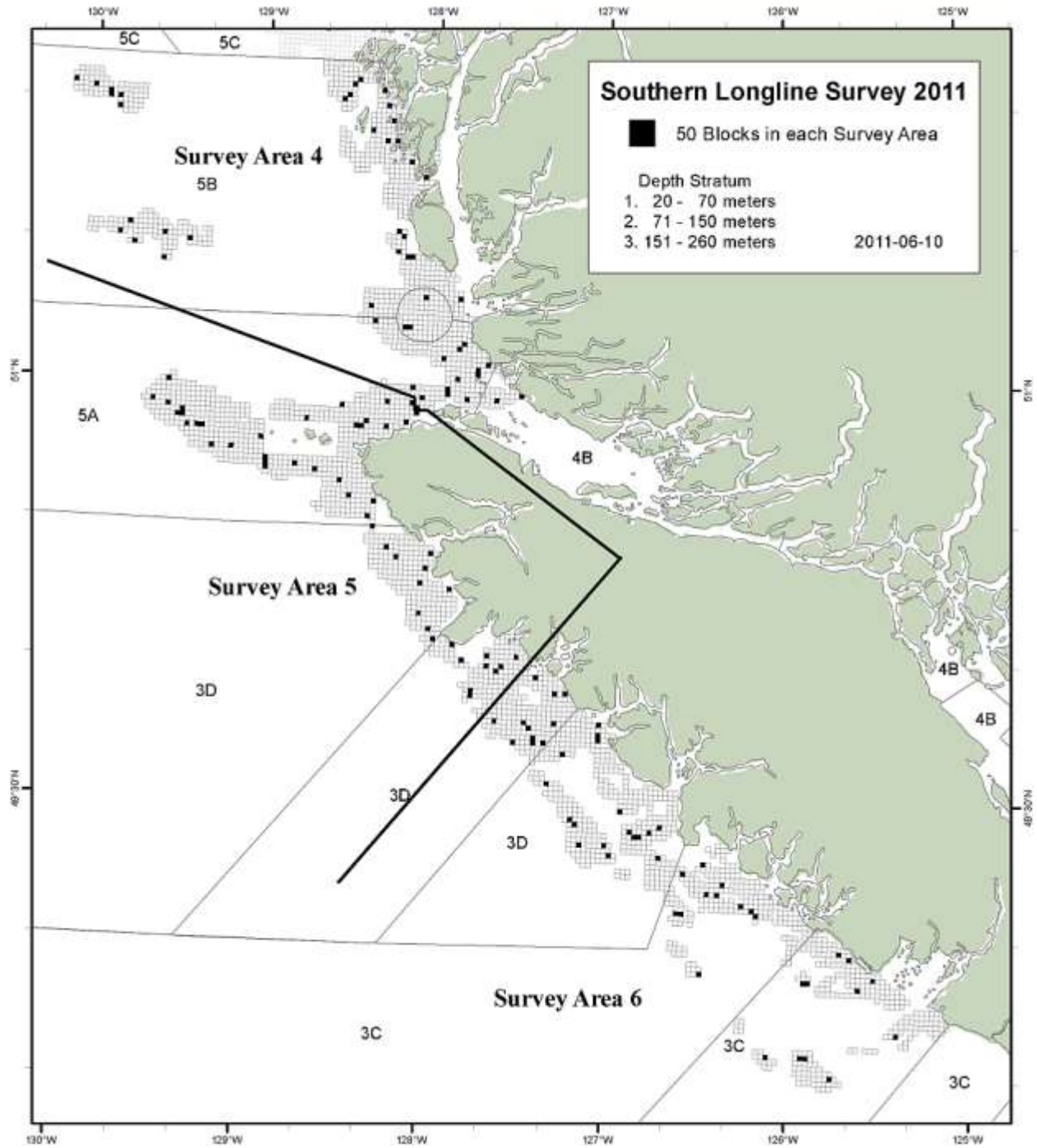


Figure 3a. Area 4 fishing locations for the Reduced Survey of 50 selected sampling blocks.

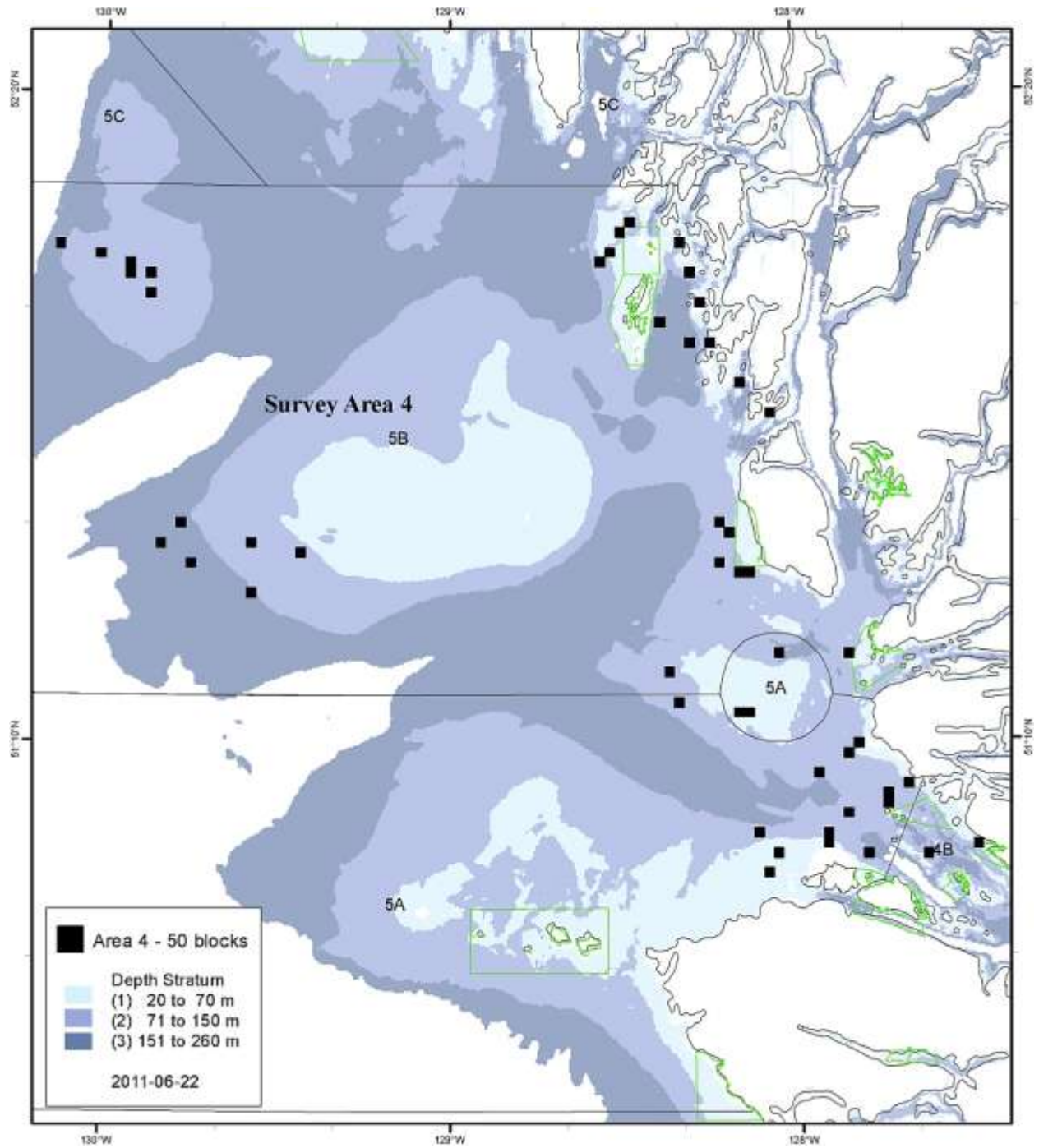


Figure 3b. Area 5 fishing locations for the Reduced Survey of 50 selected sampling blocks.

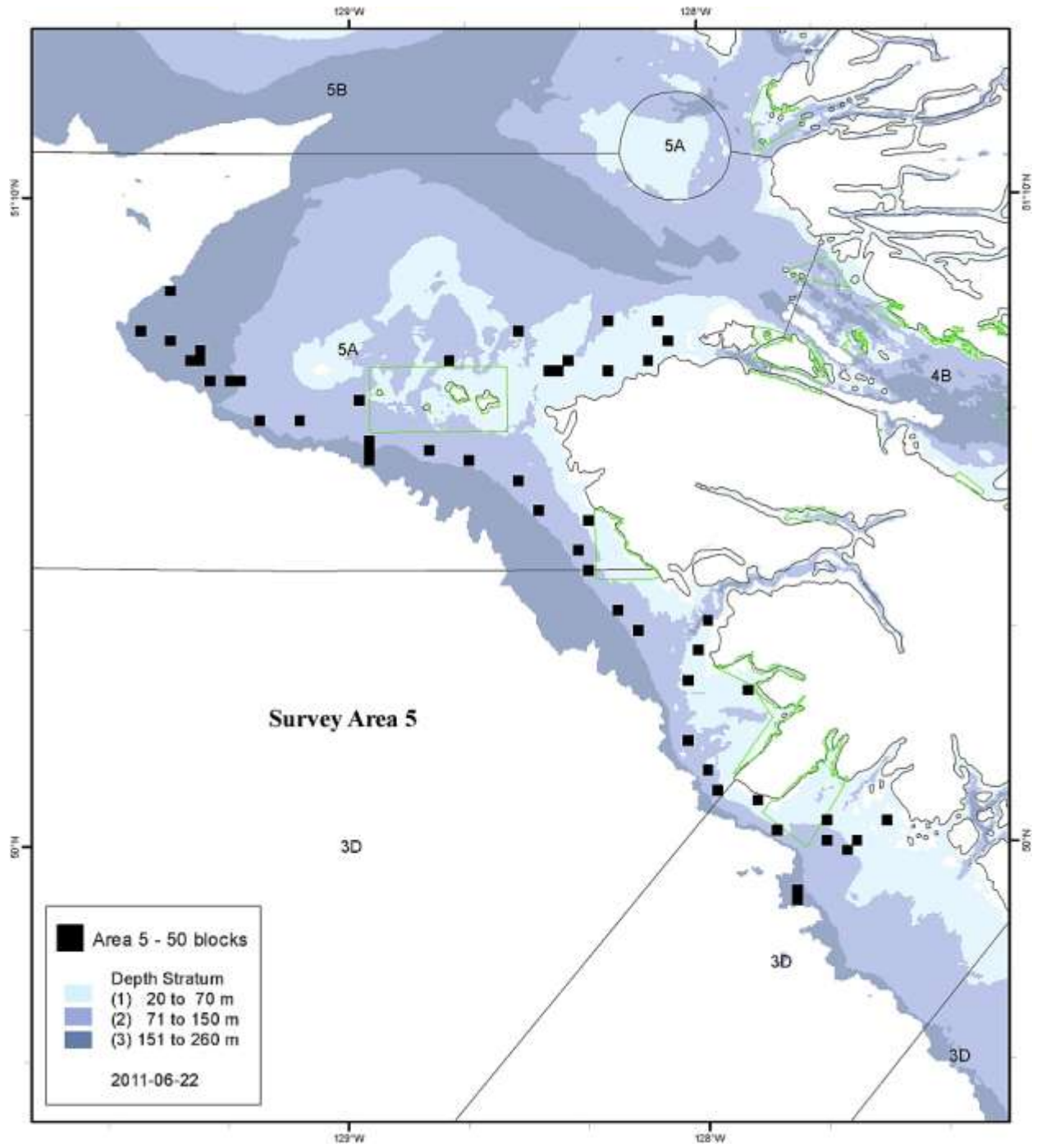
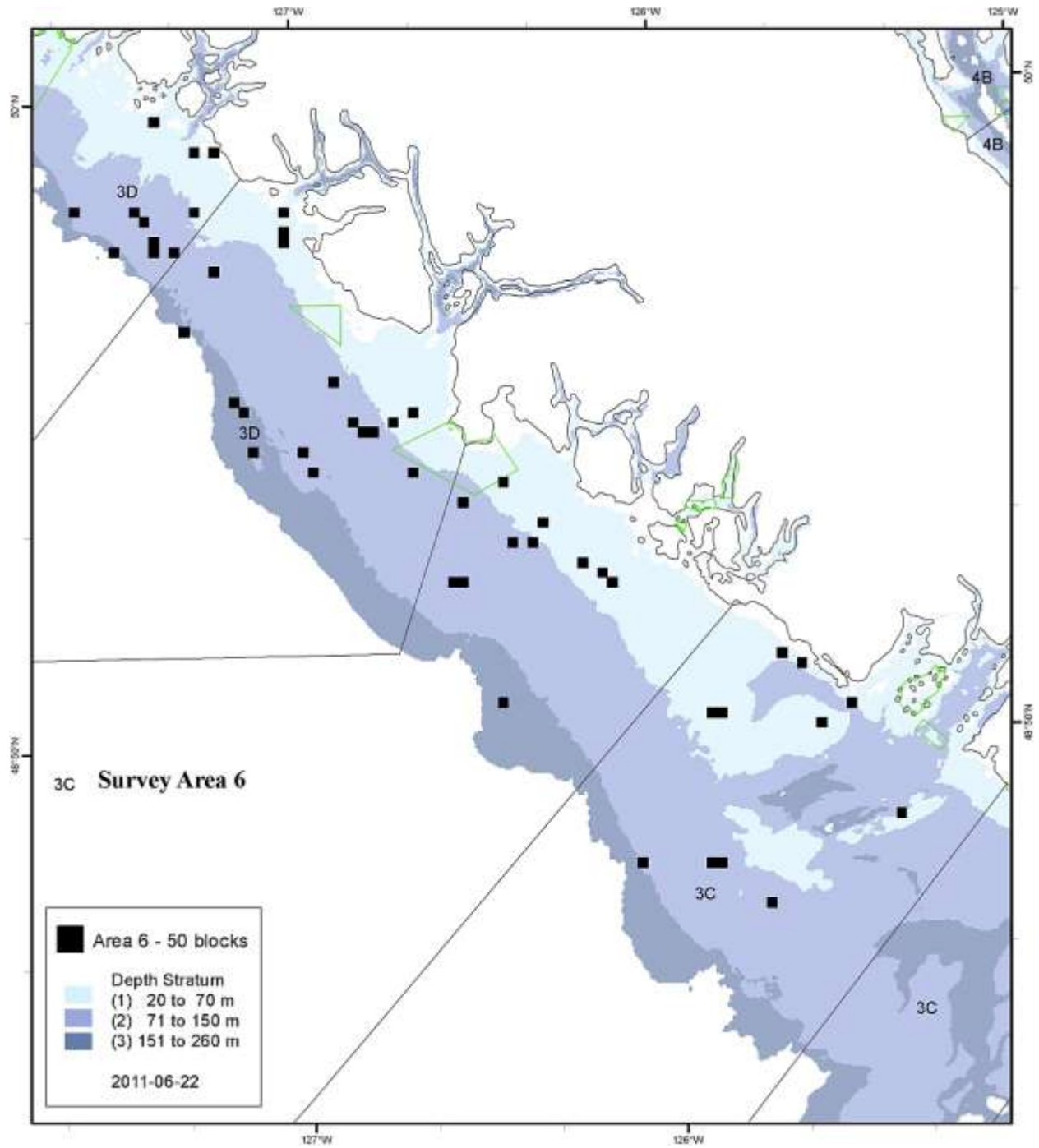


Figure 3c. Area 6 fishing locations for the Reduced Survey of 50 selected sampling blocks.



APPENDIX B – Data Recording and Biological Sampling Requirements

Attached as a separate file or electronic pdf file.

APPENDIX C. BID TENDER FORM

PACIFIC HALIBUT MANAGEMENT ASSOCIATION OF BC

c/o Schmidt, Berg & Company
101-15399 102A Avenue
Surrey, BC V3R 7K1
Canada

BID TENDER FORM 2011 Depth Stratified, Random Design Longline Research Survey in Southern British Columbia Waters

You may apply for more than one research survey area, but only one area will likely be assigned to a vessel. If applying for more than one research survey area, please submit a separate Bid Tender Form for each area. You may copy this form or request additional forms from the PHMA.

A. Research Survey Area

Please indicate the research area you want to fish.

_____ Bid Survey Area (*Area 4, Area 5, Area 6*)

B. Application Statement

The fishing vessel _____

VRN# (CFV#) _____ is hereby offered for charter by the undersigned according to the terms and requirements in the "Request for Proposal - Depth Stratified, Random Design Longline Research Survey in Southern British Columbia Waters" dated June 15, 2011 and the terms and conditions listed below.

C. Owner(s)

Name(s)	Address	Phone

D. Vessel Captain

Name	Address	Phone
Years of Fishing Experience	Years of Experience	Dates of observed trips
as Master:	Longlining:	
as Crew:	Rockfish longlining:	

Please identify the vessel(s) fished, targeted fishing activities and areas fished as Master over the last 6 years.

If you have more information please include it on a separate sheet.

E. Vessel Crew:

Other than the vessel captain, how many crew will be employed about the vessel? _____
Please identify your crew and their fishing experience, longlining experience and rockfish longlining experience and their experience in their specific role:

If you have more information please include it on a separate sheet.

F. Location of Vessel and Dates Available for Coastguard Inspection:

G. Description of Vessel:

Register number:	Fuel consumption:
Length:	Year constructed:
Beam:	Construction material:
Draft:	Number of Crew (include skipper):
Gross tonnage:	Berths:
Registered tonnage:	Fish packing medium:
Name and engine type:	Survival suits:
Engine horsepower:	Electrical power:
Fuel capacity:	Carrying capacity (tons):
Cruising speed:	Freezing capacity for samples (cubic feet):
Fire Extinguishers: Type: Number: Inspection date:	Life Raft: Type: Capacity: Inspection date:

H. Description of Fishing Gear:

(Specify hook type and size, configuration of gear)

I. Date of most recent steamboat inspection/Ministry of Transportation: (if applicable)

J. Electronic Navigation/Fish Detection Equipment:

Equipment	Make	Model
Echo sounders		
Radar		
Radios		

GPS/Plotter		
Satellite Phone(s)		

K. Compensation:

This is an all inclusive trip rate to include all vessel and crew operating expenses, offloading costs, onboard observer costs (food, travel, at-sea, land-based and drop off charges) and hail and port monitoring costs.

	<u>Full Survey</u> <u>(66 sets)</u>	<u>Reduced Survey</u> <u>(58 sets)</u>	<u>Reduced Survey</u> <u>(50 sets)</u>
Total price in Canadian dollars	_____	_____	_____
Price in Canadian dollars per fishing day (based on 4 set/hauls a day)	_____	_____	_____

L. Intended dates of charter and port of departure:

August ____ to _____, 2011, leaving from _____

M. Bidders Contact Information:

Vessel Owner Name(s):

Address:

Telephone:

Facsimile:

Email Address:

Vessel Captain Name:

Address:

Telephone:

Facsimile:

Email Address:

N. Required Prior to Final Application Acceptance:

Proof of Insurance and Consent: As part of this bidding procedure, to be included with the Bid Tender Form, vessels must submit a letter from their insurance company providing proof of insurance (Hull & Machinery coverage, Protection & Indemnity Coverage to a limit of at least \$2.0 million) as well as granting Underwriter’s Consent to engage in the survey.

O. Terms and Conditions:

Vessel owners/captain:

In order to qualify for the PHMA charter, vessel owners/captains need to abide by the following terms and conditions:

- a) The vessel owner agrees to indemnify and save harmless the PHMA from all claims and liability for loss or damage from any cause, including injury, damage or loss of personnel, vessel, its equipment, and third parties.
- b) The vessel to be used in conducting the survey needs to be a halibut longline licensed vessel;
- c) The vessel owner or vessel captain will be responsible for the following, prior to commencement of charter fishing activities:
 - all matters relating to safety of personnel, the vessel and equipment operation;
 - adherence at all times to navigational rules whether it be during fishing operations, running, drifting, or when at anchor;
 - adherence to all Provincial, Federal and International laws pertaining to commercial fishing;
 - acquiring a scientific or experimental licence from DFO;
 - scheduling for an at-sea observer prior to hailing out for any charter trip;
 - hailing out prior to each charter trip following standard procedures;
 - picking up and using only the bait specified in the charter RFP;
 - ensuring that crew assist the at-sea observer as required;
 - ensuring crew remove rockfish otoliths from under the gill plate;
 - contacting the PHMA (at the numbers below) 24 hours prior to hail-in/landing to advise catch composition and to receive direction where to deliver;

Herb van Grootel	Or:	Gary Williamson
604-948-2731		604-946-6507
604-328-5555 (cell)		604-341-2297 (cell)
- hailing in prior to landing following standard procedures;
- forwarding all required documents to the PHMA office;
- flying the PHMA Research Charter flag while on charter trips; and,
- paying for all observer (at-sea, travel, land-based, drop-off), hail, dockside monitoring and all costs associated with offloading in a non-designated port.

- d) The vessel owner and master will be available to participate in a pre-charter conference call as well as a post-charter debriefing conference call.
- e) The vessel owner or master acknowledges that no payment shall be made by the PHMA without the submission of an invoice. Invoices will be billed at the gross rate per fishing day, minus any crew shares (includes deductions for EI, WCB rates and any other deductions and employer's share of deductions for same) paid for by the buyer who purchased the fish for any given charter trip.
- f) The vessel owner or master acknowledges that no alcohol consumption or illegal drug use is allowed aboard PHMA chartered vessels, including days at sea and anchor days, as well as port days or when the vessel is at the dock. This is a **no tolerance policy** which will be in effect at all times the vessel is on charter, and violation of this policy is sufficient cause for contract termination, and possible exclusion from future survey eligibility for one or more years.
- g) All bycatch not retained must be carefully released from the hook. This includes dogfish, shark and skate species as well. Vessels encountering 'tail-wrapped' shark specimens shall make every effort to release the animal unharmed.

Fish Processors/Buyers:

Qualified fish processors/buyers need to abide by the following terms and conditions:

- a) Provide quotes upon request to PHMA on prices for each fish species;
- b) Pay crew shares (and deduct these off the fish proceeds cheques to the PHMA) based on information provided by vessel owners or masters – this includes deductions for EI, WCB rates and any other deductions and employer's share of deductions for same;
- c) Invoice the PHMA for all ice used on the charters.
- d) Provide a report to the PHMA within three (3) days of each trip including the poundage of each fish species, the amount due to the PHMA for fish landed;
- e) Prepare a fish quality report and send it to the PHMA office indicating that the quality of the fish landed for any PHMA charter fishing trip did not result in lower than prevailing market prices being paid to the PHMA; and,
- f) Send cheques to PHMA, within 14 days of any offload of fish from a PHMA charter trip for all proceeds, net of any crew costs as mentioned above. Cheques should be made payable to PHMA and sent to:

PHMA
PO Box 16046, 617 Belmont Street
New Westminster, BC V3M 6W6

PHMA:

The PHMA is responsible for:

- a) Issuing requests for proposals' to harvesters;
- b) Selecting vessels that will participate in the PHMA depth stratified, random design, rockfish research survey;
- c) Coordinating all planning activities between DFO research staff and harvesters in preparation for, during and after the conduct of the PHMA rockfish research survey;
- d) Paying the cost of fish charters, less crew share (includes deductions for EI, WCB rates and other deductions and employer's deductions for same) paid by the processor/buyer, to vessel owners;
- e) Ensuring charter skippers are provided with the fish ticket within seven (7) days of offload;
- f) Identifying fish processor/buyers for vessels on a trip by trip basis, negotiating landed prices and directing vessels where to land;
- g) Arranging fish leases for the legal-sized/marketable halibut, sablefish and lingcod retained and landed on the charters.
- h) Arranging fish leases for the legal-sized/marketable dogfish released on the charters.
- i) Paying fish lease costs for legal-sized/marketable halibut, sablefish and lingcod caught on the charters.
- j) Paying fish lease costs for legal-sized/marketable dogfish released on the charters.
- k) Paying for all bait used on the charters and arranging for availability at or shipping to the designated landing ports.
- l) Paying for all ice used on the charters
- m) Preparing an annual report on the activities surrounding the PHMA rockfish research survey for distribution at the PHMA AGM.

P. Consent and Declarations:

I have read and accept the requirements, terms and conditions described in of the June 25, 2011 Request for Proposal for the 2011 Depth Stratified, Random Design Longline Research Survey in Southern British Columbia Waters.

I have read and accept the terms and conditions as described in the Bid Tender Form (above) in relation to the PHMA depth stratified, random design, rockfish research survey and accept the responsibilities pertaining to the section pertaining to myself or my company.

I declare that all information I have provided on this Bid Tender Form is true to the best of my knowledge and that the vessel offered for charter is mechanically sound in all respects, seaworthy for fishing in the designated area and capable of completing the required tasks.

Name of vessel owner(s) _____
(PLEASE PRINT)

Name of managing owner _____
(PLEASE PRINT)

Signature of managing owner _____

Date of application _____

Address of managing owner _____

Telephone (_____) _____

Fax (_____) _____

Email _____